

# Books

These instructions explain how to correctly prepare a print-ready file.

---

## 1. PDF

Our systems can only process files in PDF format and in 1:1 scale (not password-protected).

## 2. CROP MARKS AND REGISTRATION MARKS

The PDF should be exported without crop marks or registration marks.

## 3. COLOURS

All files should be sent in CMYK (cyan, magenta, yellow and black) format with the Fogra 39 colour profile.

The same colour can appear slightly different on different media due to the physical composition of the paper. Order our paper sample pack and colour guide if you would like to assess the appearance of different colours on our various paper types.

All files must be sent in CMYK (cyan, magenta, yellow and black), with a Fogra 39 colour profile.

Any images which are sent in RGB or in PANTONE colours will be automatically converted using a standard separation profile.

If you have chosen 'Black and white printing of inside pages' we do not recommend using images designed for CMYK printing (even if they have been converted to black and white) or graphics with many gradients, as the results will be suboptimal. If you wish to include images, it is best to opt for line or monochrome drawings.



## 4. RESOLUTION

The optimal resolution for the print files is 300 dpi.

## 5. ADDITIONAL INFORMATION

The vector paths must be at least 0.25 pt.

We do not advise placing frames and passepartouts too close to the edges, to avoid any inaccuracy due to the cutting tolerances.

Fonts should be embedded in the PDF and not converted into curves or paths. The minimum font size (below which we cannot guarantee perfect print quality) is 6 pt.

By default, when two overlapping opaque colours are printed, the top colour knocks out the area underneath.

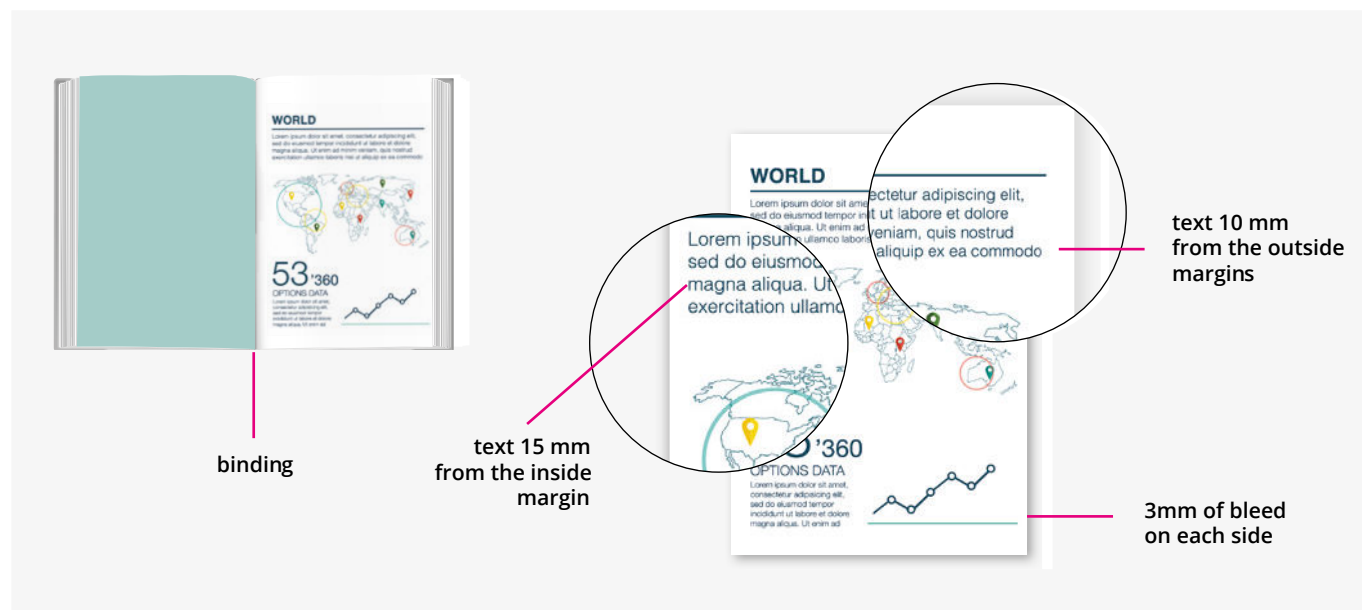
Overprinting prevents knockouts and allows the inks to overlap.

To avoid unexpected colour results, ensure that there are no overprinted objects or text in your file.

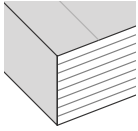
## 6. INSIDE PAGES

Each page must have a 3 mm bleed on each side.

We recommend that all text is positioned at least 15 mm from the inside margin and 10 mm from the outside margins, to avoid it being difficult to read or too close to the binding.



## 7a. CREATING THE COVER



Perfect paperback binding

Use two pages, one for the inside and one for the outside, containing the entire cover spread.

Add a 3 mm bleed on each side.

Page 1 (outside): place the outside back cover on the left, the front cover on the right, and the spine in the middle, with the dimensions given on the website.

Page 2 (inside): place the inside front cover on the left, the inside back cover on the right, and the spine in the middle, using the dimensions given on the website.

Important: leave a 3 mm white strip to the right and left of the spine to allow perfect adhesion between the glue and the paper, and to avoid the book breaking when read.



Cover (outside)



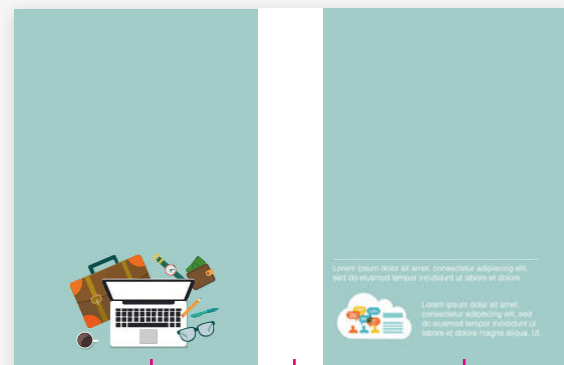
back  
cover

spine

cover



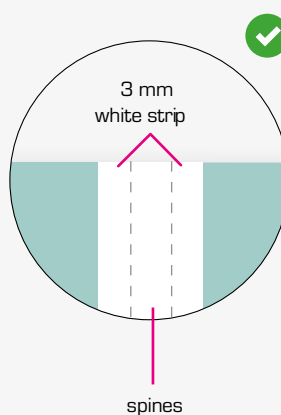
Cover (inside)



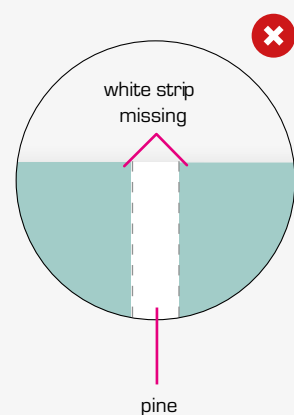
inside  
front cover

spine

inside  
back cover



spines

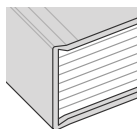


pine

### GLUING

To ensure the book is glued perfectly, the spine area between the inside front and back covers should be left blank, and a 3 mm white strip should be added to the right and left of it.

## 7b. CREATING THE COVER

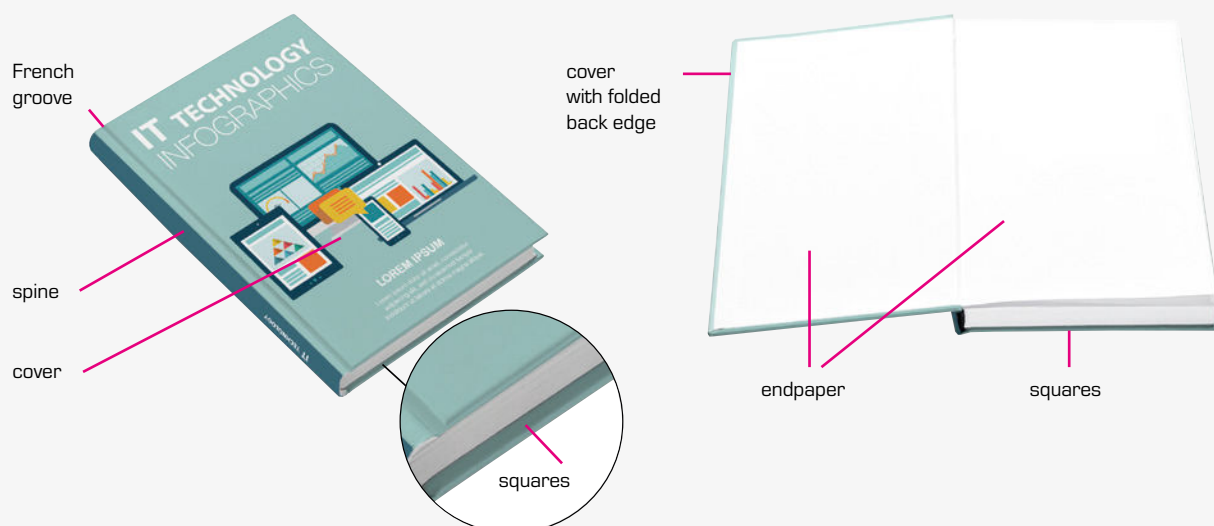


Perfect hardback binding

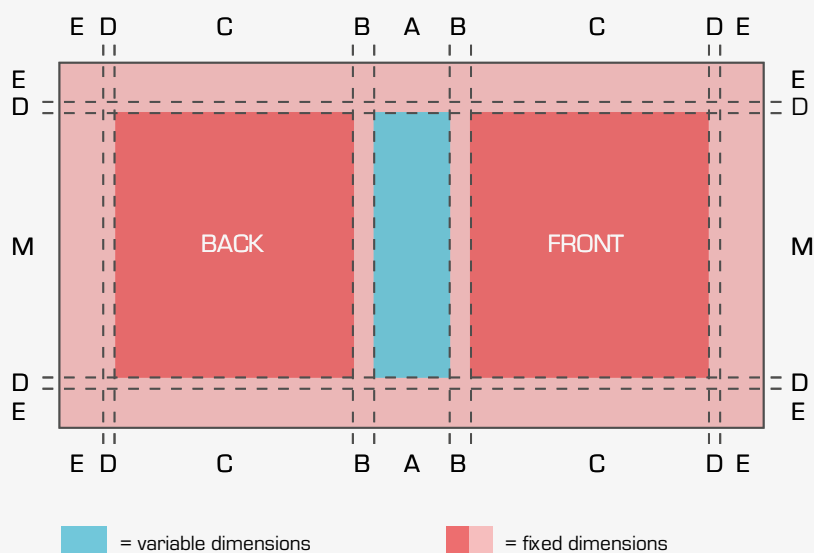
Use a single page for the entire cover spread, using these instructions and the measurements shown in the table.

PLEASE NOTE: the endpapers cannot be printed with this process

Hardback book components:



How to prepare the cover file:



The letters in the diagram above refer to the fixed bleeds (in mm) that you need to add to your file.

These are: E = bleed for the folded edges; D = bleed for the squares; B = bleed for the French groove.

The letters C and M refer to the dimensions of the front and back. Don't worry if they are slightly different from the standard format you selected – this will allow you to ensure your artwork is properly centred.

You will receive your book in a standard format.

Use the following tables to calculate the file dimensions (in mm) for your hardback cover.

The examples in this table refer to books with a 7 mm spine.

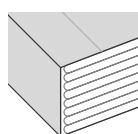
To calculate the width of your file:

SIZE	ED		CB		AB		CD		E	TOTAL
A4 portrait	19	2	205	11	71	1	205	21	9	481 mm
A4 landscape1	92		292	11	71	1	292	21	96	55 mm
A5 portrait	19	2	143	11	71	1	143	21	9	357 mm
A5 landscape1	92		205	11	71	1	205	21	9	481 mm

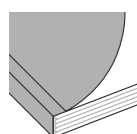
To calculate the height of your file:

SIZE	ED		MD		E	TOTAL
A4 portrait	19	2	303	21	9	345 mm
A4 landscape1	92		216	21	9	258 mm
A5 portrait	19	2	216	21	9	258 mm
A5 landscape1	92		154	21	9	196 mm

## 7c. CREATING THE COVER



Sewn binding

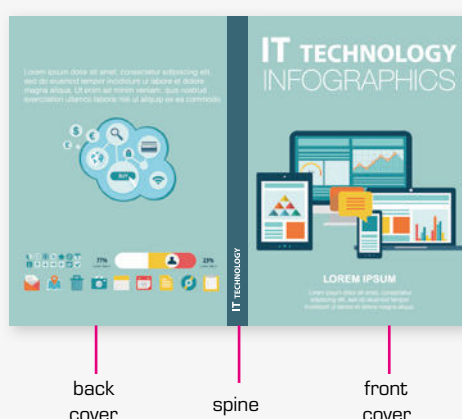


Paperback

Use a single page for the entire cover spread.

Add a 3 mm bleed on each side, placing the outside back cover on the left, the front cover on the right, and the spine in the middle, using the dimensions given on the website.

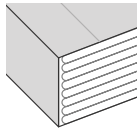
PLEASE NOTE: the inside of the cover (inside front and inside back) cannot be printed with this process.



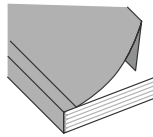
3 mm bleed on each side

In the example shown here, the total dimensions of the document will be:  
width: 148 + 148 mm + 6 mm (spine) + 3 + 3 mm (bleed) = 308 mm  
height: 210 mm + 3 + 3 mm (bleed) = 216 mm

## 7d. CREATING THE COVER



Sewn binding



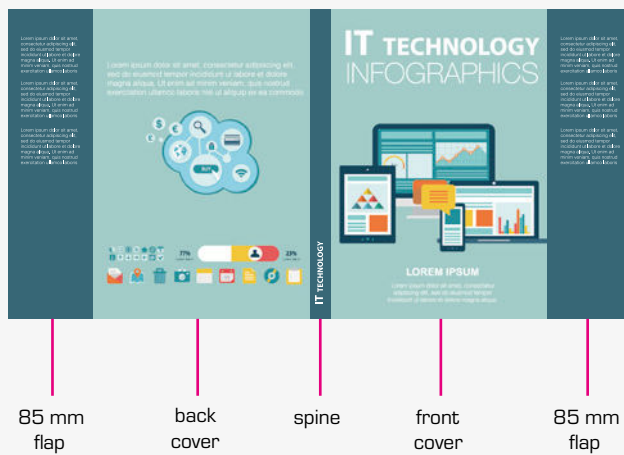
Paperback with flaps

Create a one-page file for the whole cover spread.

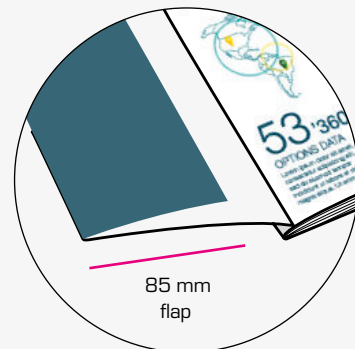
Add a 3 mm bleed on each side, placing the outside back cover on the left, the front cover on the right, and the spine in the middle, using the dimensions given on the website.

The flaps are always 85 mm wide and should be added to the cover spread, one on the left and one on the right, as shown in the diagram below.

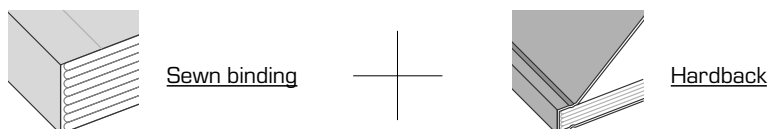
PLEASE NOTE: the inside of the cover (inside front and inside back) cannot be printed with this process.



3 mm bleed  
on each side



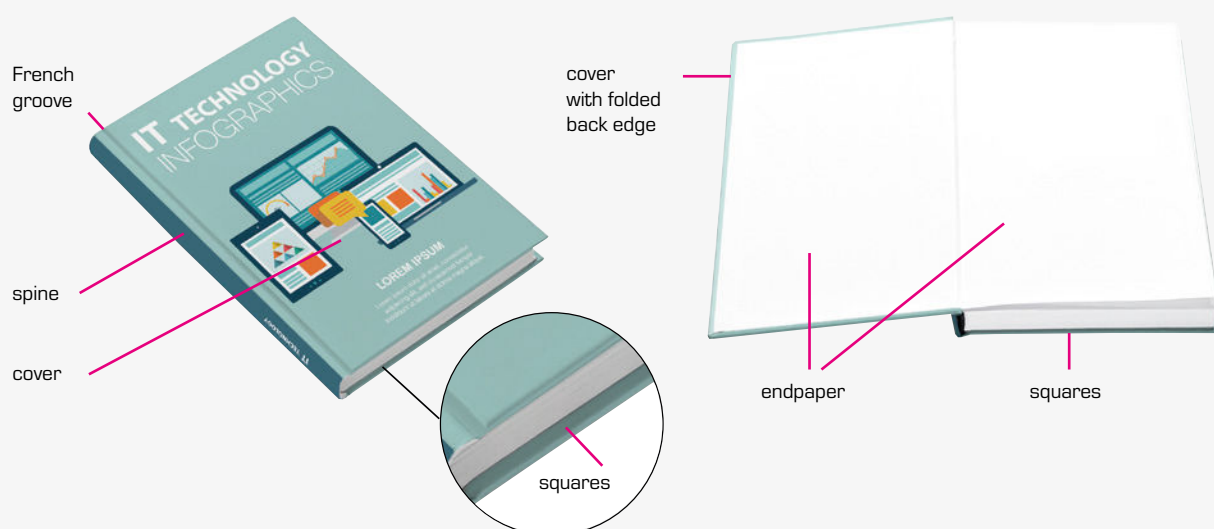
## 7e. CREATING THE COVER



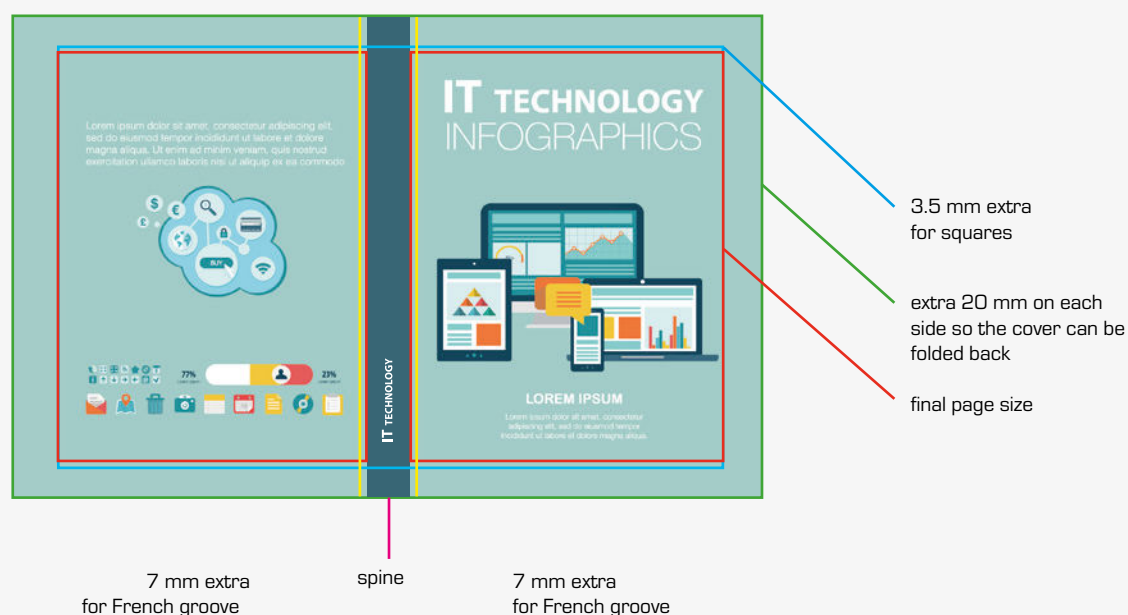
Use a single page for the entire cover spread. Add an extra 20 mm on each side to the final dimensions to allow the cover to be folded back. Finally, add 7 mm to the left and right of the spine for the French groove and 3.5 mm above and below for the squares.

PLEASE NOTE: the endpapers cannot be printed with this process.

Sewn-bound hardback book components



How to prepare the cover file:



E.g.:  
Final size = A4 (210 x 297 mm)  
14 mm spine

Send a file with the following dimensions: 488 x 344 mm  
› Width: 210 + 210 + 14 (spine) + 20 + 20 (folded edge)  
+ 7 + 7 (French groove) = 488 mm  
› height: 297 + 20 + 20 (folded edge) + 3.5 + 3.5 (squares) = 344 mm